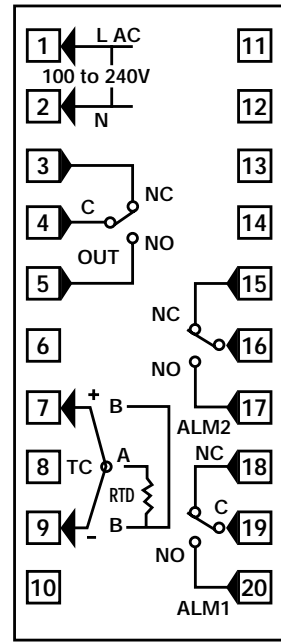
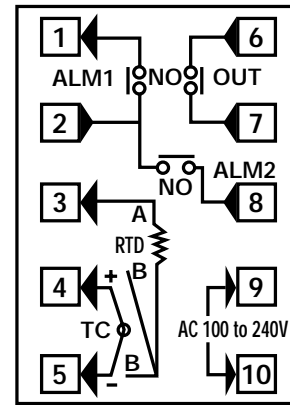


WIRING DETAILS

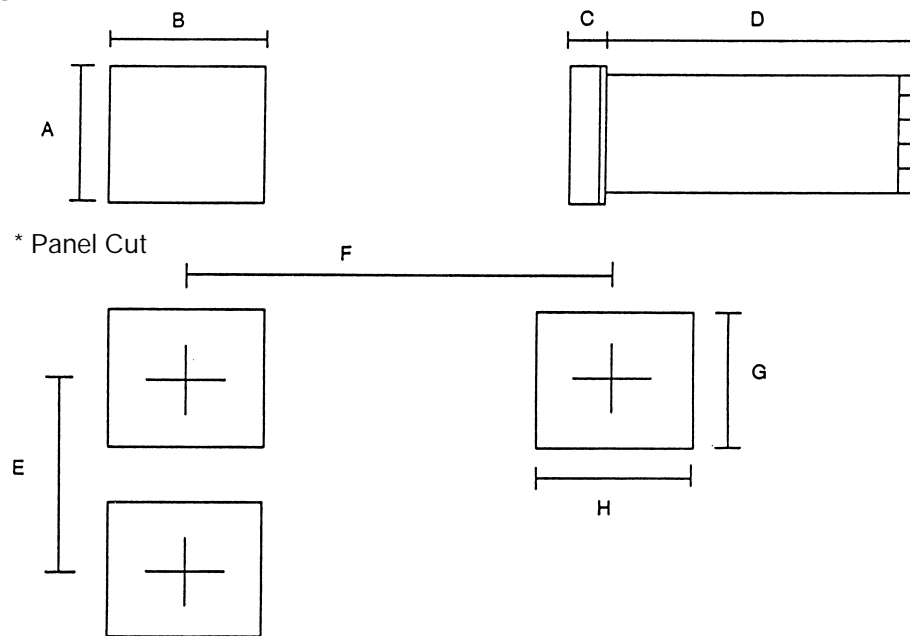


MTC-92



MTC-52

PHYSICAL DIMENSIONS



Model No.	A	B	C	D	E	F	G	H
MTC-92	96	96	15	100	125	110	92	92
MTC-52	48	48	8	100	80	65	46	46

MTC Series

DIN SIZE MICRO PROCESSOR BASED DIGITAL TEMPERATURE CONTROLLERS



- MULTIPLE INPUT SELECTION**
 56 input selections
 Thermocouple, RTD
- MULTIPLE CONTROL FUNCTIONS**
 On-Off, P, PI, PD, PID, PID Auto-Tune
- MULTIPLE ALARM CONFIGURATION**
 Maximum two alarms can be fitted and configured to operate in 12 different modes.
- PLUG IN MOUNTING STYLE**
 Front panel mounting instrument withdraws from housing to facilitate easy service and maintenance
- ECONOMICAL**

STANDARD SPECIFICATIONS	
Setpoint accuracy	0.5% FS
Indication accuracy	0.5% FS
Control action	PID control (with auto-tune) P = 0~100% Off when set to 0 I = 0~3600 secs Off when set to 0 D = 0~900 secs Off when set to 0
Control output	SPST Relay 3A / 250 V AC 0/12 V for SSR
Alarm	2 X SPST Relay 3A / 250 V AC
Input	Refer to Model Codes
Sensor break action	Up scale as standard
Remote set point input	
Ambient temperature operating range	0~50°C
Ambient humidity operating range	10~90% RH
Supply voltage	85 V ~ 265 V AC (50 or 60 Hz selectable)
Power consumption	< 5 VA
Dimensions	Refer to table on page 4
Weight	300 g

MODEL NUMBER CODE		
MODEL	SUFFIX	DESCRIPTION
MTC-52	<input type="checkbox"/> <input type="checkbox"/> <input type="checkbox"/> <input type="checkbox"/> <input type="checkbox"/> <input type="checkbox"/>	48 x 48 mm 1/16 Din
MTC-92	<input type="checkbox"/> <input type="checkbox"/> <input type="checkbox"/> <input type="checkbox"/> <input type="checkbox"/> <input type="checkbox"/>	96 x 96 mm 1/4 Din
DISPLAY	F	Full scale indicating
CONTROL ACTION	P	PID Control fully selectable with auto-tune
ALARMS	2 3	Single alarm (MTC 52) Two alarm relays (MTC 92)
INPUT OPTIONS	J K R S T P	Thermocouple type J Thermocouple type K Thermocouple type R Thermocouple type S Thermocouple type T RTD Pt100 3 wire system IEC 751 (Other inputs are available - enquire at your local sales office)
CONTROL OUTPUT	-R -V	Relay Output 1A / 250 V Resistive load 0 / 12 V DC pulse for SSR