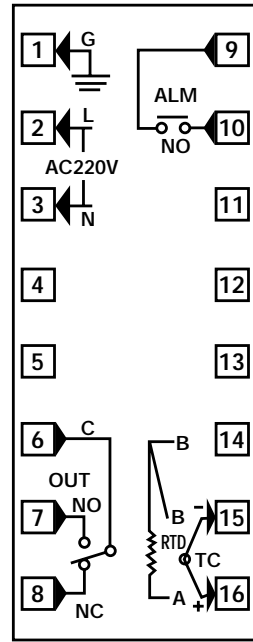
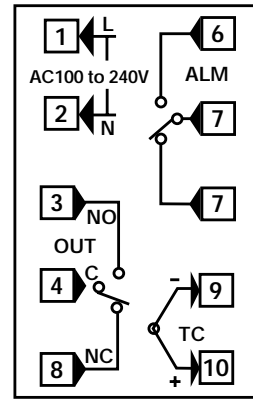


WIRING DETAILS

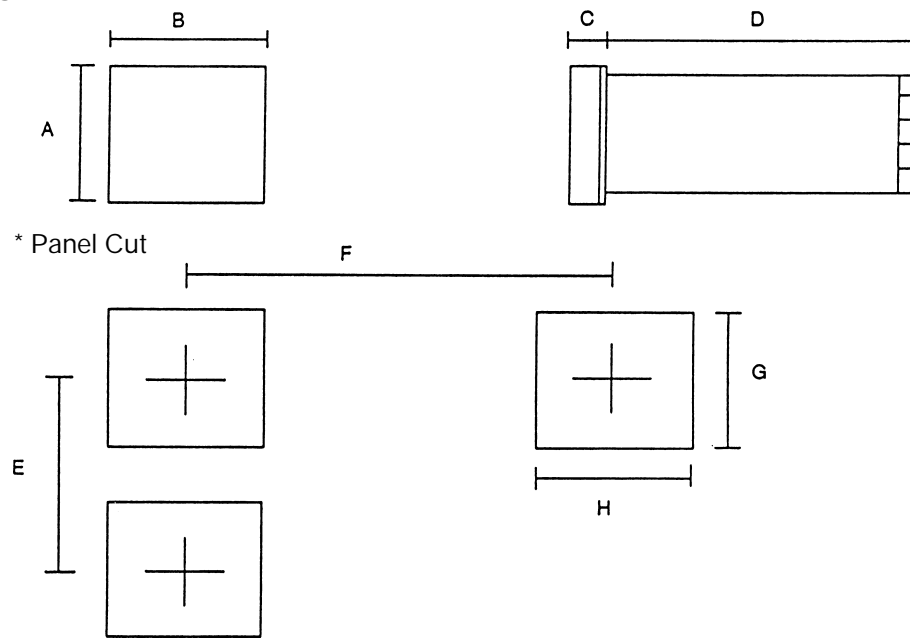


DTC-92



DTC-52

PHYSICAL DIMENSIONS



Model No.	A	B	C	D	E	F	G	H
DTC-92	96	96	15	100	125	110	92	92
DTC-52	48	48	8	100	80	65	46	46

DTC Series

DIN SIZE MICRO PROCESSOR BASED DIGITAL TEMPERATURE CONTROLLERS



- INPUT**
 Input selections
 Thermocouple, RTD
- MULTIPLE CONTROL FUNCTIONS**
 On-Off, P, PI, PD, PID, PID Auto-Tune
- ALARM CONFIGURATION**
- PLUG IN MOUNTING STYLE**
 Front panel mounting instrument withdraws from housing to facilitate easy service and maintenance
- ECONOMICAL**

STANDARD SPECIFICATIONS		
Setpoint accuracy	PT100	T/C
Indication accuracy	0.5% FS	1.0% FS
Control action	PID control P = 0~100% I = 0~3600 secs Off when set to 0 D = 0~3600 secs Off when set to 0	
Control output	SPST Relay 3A / 250 V AC 0/12 V for SSR	
Alarm	SPST Relay 3A / 250 V AC	
Input	Refer to Model Codes	
Sensor break action	Up scale as standard	
Ambient temperature operating range	0~50°C	
Ambient humidity operating range	10~90% RH	
Supply voltage	DTC-52 85 V ~ 265 V AC (50 or 60 Hz selectable)	DTC-92 220V AC
Power consumption	< 5 VA	
Dimensions	Refer to table on page 4	
Weight	300 g	435g

MODEL NUMBER CODE		
MODEL	SUFFIX	DESCRIPTION
DTC-52	<input type="checkbox"/> <input type="checkbox"/> <input type="checkbox"/> <input type="checkbox"/> <input type="checkbox"/> <input type="checkbox"/>	48 x 48 mm 1/16 Din
DTC-92	<input type="checkbox"/> <input type="checkbox"/> <input type="checkbox"/> <input type="checkbox"/> <input type="checkbox"/> <input type="checkbox"/>	96 x 96 mm 1/4 Din
DISPLAY	F	Full scale indicating
CONTROL ACTION	A P	On / Off control PID Control fully selectable with auto-tune
ALARMS	2	Single alarm fitted as standard
INPUT OPTIONS	J K P	Thermocouple type J Thermocouple type K RTD Pt100 3 wire system IEC 751 Other inputs are available - enquire at your local sales office
CONTROL OUTPUT	-R -V	Relay Output 1A / 250 V Resistive load 0 / 12 V DC pulse for SSR